



Alexander Hudson Estates

Sales Particulars



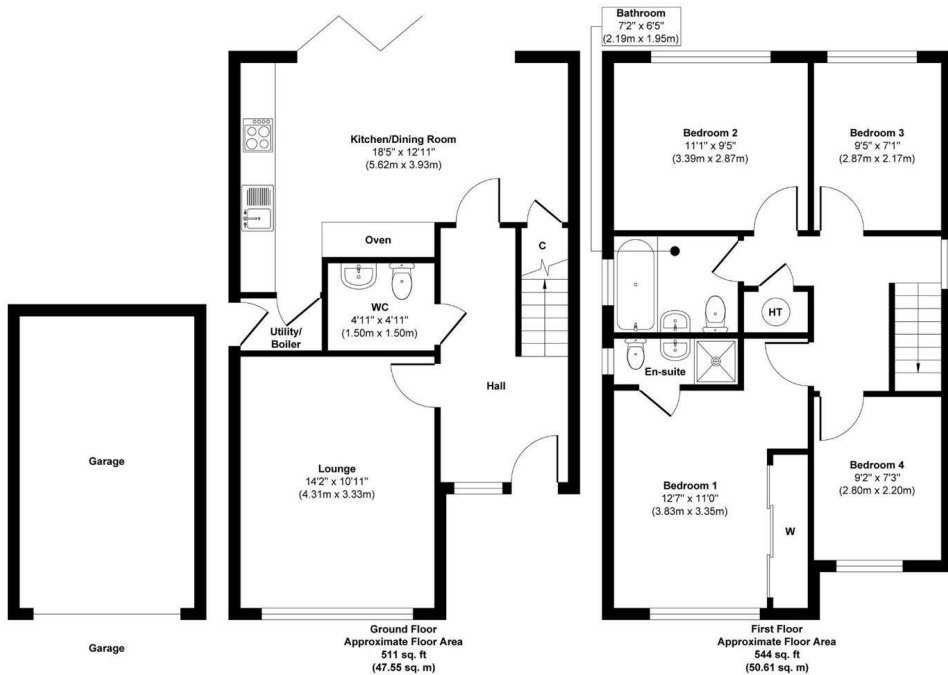
The Property

Alexander Hudson Estates introduces to market this four-bedroom detached family home with garage and spacious rear garden in the popular residential area of Forest Gate, NE12. Close-by to a range of local amenities, transport links and schooling. Beautifully presented throughout, comprising of an entrance hallway, WC, living room, open-plan kitchen and dining area with utility.

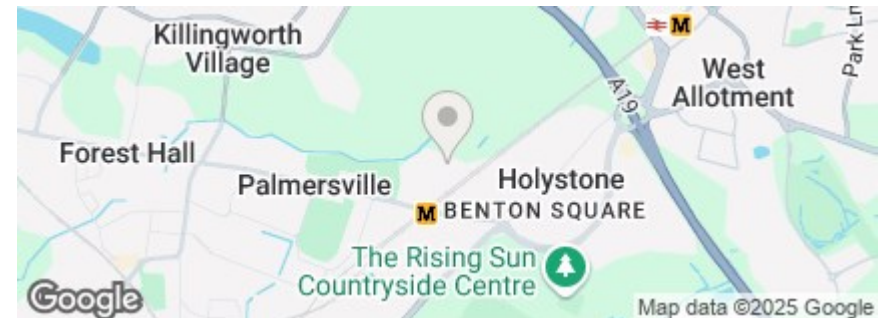
On the first floor lies a bathroom and four bedrooms with an ensuite attached to the main bedroom. To the front is a driveway and detached garage, whilst at the rear is a fully encompassed, landscaped garden, perfect to enjoy those warm summer months. The property lies just a 5-minute drive (or 15-minute walk) from a large Asda supermarket and is a similar distance from The Rising Sun Country Park, a green oasis of 162 hectares. With ponds, woodlands and extensive grasslands, the site is an ideal place to relax and enjoy the great outdoors.

Killingworth Shopping Centre is also only a 10 minute drive, offering another large supermarket and various high street shops; whilst The Lakeside Centre is also close by, a leisure centre which offers a swimming pool, indoor sports courts, a gym and a soft play for children. Palmersville Metro Station and the A19 offer ease of access across Newcastle and further afield.

Freehold
Council Tax: D
EPC Rating: 84



Approx. Gross Internal Floor Area 1055 sq. ft / 98.16 sq. m
Produced by Elements Property





Alexander Hudson Estates
The Printworks
20 Arrow Close
NE12 6QN

0191 268 7433
sales@alexanderhudson.co.uk